

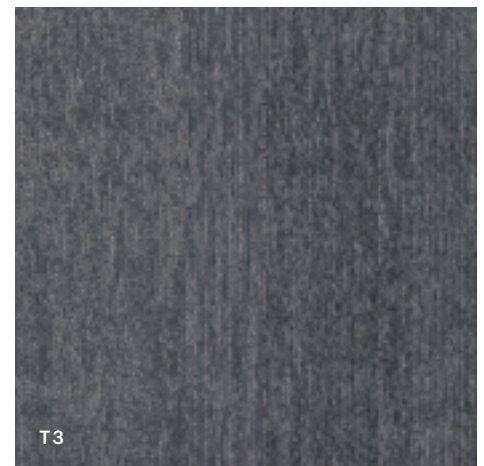
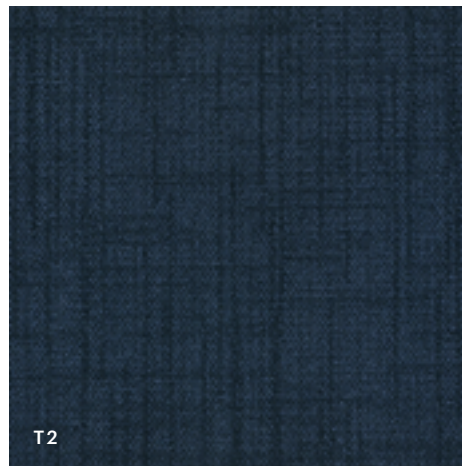
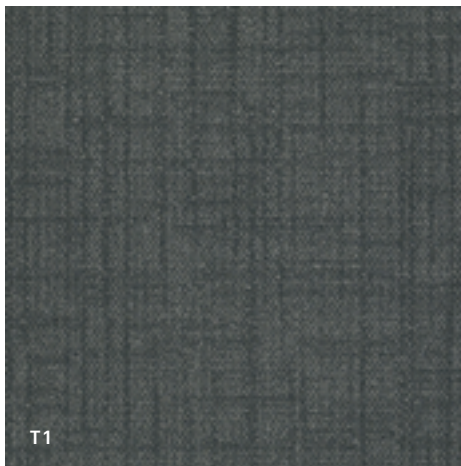
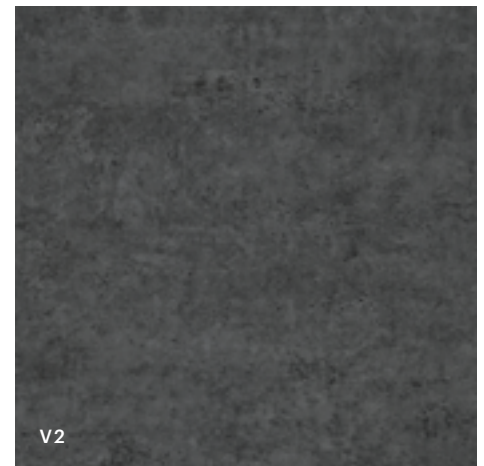


JBA | SEPT. 2021

FLOORING SOLUTIONS FOR SMARTER IMPACTS

# Design Standards

# Design Finishes



## Carpet Tile

T1	SURROUND STRATAWORX 5T421   24X24 STORM CLOUD 17597	\$13.25 /SY
T2	SURROUND STRATAWORX 5T421   24X24 DENIM 17496	\$13.25 /SY
T3	ARRANGE STRATAWORX 5T294   24X24 STEEL GREY 94530	\$13.25 /SY

## LVT

V1	TERRAIN II 20 MIL 0454V   6X48 LARK 05016	\$2.10 /SF
V2	COMPOUND 2.5 4074V   24X24 GRANITE 77585	\$2.40 /SF

## Wall Base

W1	4" COVE BASE 148VS   4X120 NIGHT 00066	\$87.60 /ROLL
----	--	------------------

## Paint

P1	SHERWIN WILLIAMS SNOWBOUND SW 7004
P2	SHERWIN WILLIAMS GOSSAMER VEIL SW 9165
P3	SHERWIN WILLIAMS DOVETAIL SW 7018

NOTE: Pricing is for material only and effective through July 31, 2022.



# ShawContract®

## Surround Strataworx

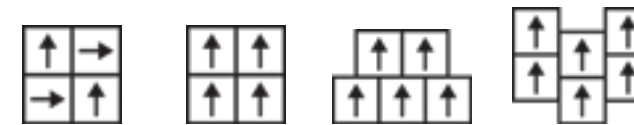
CARPET TILE 15 YEAR COMMERCIAL LIMITED FOR STRATAWORX

<https://pdmsview.shawinc.com/viewer/doc/5964>

Product Type	<b>Carpet Tile</b>
Collection	<b>Selectone</b>
Style Number	<b>5T421</b>
Construction	<b>Multi-Level Pattern Loop</b>
Fiber	<b>Eco Solution Q® Nylon</b>
Dye Method	<b>100% Solution Dyed</b>
Primary Backing	<b>Synthetic</b>
Secondary Backing	<b>Strataworx® Tile</b>
Protective Treatments	<b>SSP® Shaw Soil Protection</b>
Recommended Adhesive	<b>Shaw 5000, Shaw 5100, Shaw 4151, Shaw 3800 or Shaw 5036</b>

	u.s.	metric
Product Size	<b>24 in x 24 in</b>	<b>61 cm x 61 cm</b>
Area per Carton	<b>80 ft<sup>2</sup></b>	<b>7.43 m<sup>2</sup></b>
Pieces per Carton	<b>20 pcs</b>	
Gauge	<b>1/12 in</b>	<b>47.2 per 10 cm</b>
Stitches	<b>9.0 per in</b>	<b>36.5 per 10 cm</b>
Finished Pile Thickness	<b>0.084 in</b>	<b>2.13 mm</b>
Average Density	<b>6429 oz/yd<sup>3</sup></b>	<b>0.238 g/cm<sup>3</sup></b>
Kilotex		<b>9.27</b>
Total Thickness	<b>0.222 in</b>	<b>5.64 mm</b>
Tufted Weight	<b>15 oz/yd<sup>2</sup></b>	<b>508.6 g/m<sup>2</sup></b>

### Recommended Installation Method



Quarter Turn    Monolithic    Brick    Ashlar

### Coordinating Products

Carpet Tile: **Diffuse Strataworx, Poured Strataworx**

### Performance + Testing

Antimicrobial Assessment	<b>Passes (AATCC-174) (When installed using Shaw 5036 adhesive)</b>
Pill Test	<b>Pass</b>
Radiant Panel	<b>Class I</b>
NBS Smoke	<b>Less Than 450</b>
Electrostatic Propensity	<b>Less Than 3.5 kv</b>
CRI Green Label Plus (GLP)	<b>GLP2671</b>
ADA Compliance	<b>&gt;0.6, meets the recommended static coefficient of friction for ADA walking surfaces and accessible routes***</b>

Test Reports may be included or listed by the manufacturing/inventory style number as opposed to the noted selling style number.

### Warranties

[15 Year Commercial Limited Warranty Warranty](#)

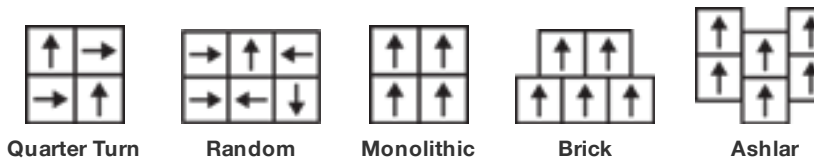
## Arrange Tile

CARPET TILE 15 YEAR COMMERCIAL LIMITED FOR STRATAWORX  
<https://pdmsview.shawinc.com/viewer/doc/5964>

Product Type	<b>Carpet Tile</b>
Collection	<b>Simply By Nature</b>
Style Number	<b>5T294</b>
Construction	<b>Multi-Level Pattern Loop</b>
Fiber	<b>Eco Solution Q® Nylon</b>
Dye Method	<b>100% Solution Dyed</b>
Primary Backing	<b>Synthetic</b>
Secondary Backing	<b>Strataworx® Tile</b>
Protective Treatments	<b>SSP® Shaw Soil Protection</b>
Recommended Adhesive	<b>Shaw 5000, Shaw 5100, Shaw 4151, Shaw 3800 or Shaw 5036</b>

	u.s.	metric
Product Size	<b>24 in x 24 in</b>	<b>61 cm x 61 cm</b>
Area per Carton	<b>80 ft<sup>2</sup></b>	<b>7.43 m<sup>2</sup></b>
Pieces per Carton	<b>20 pcs</b>	
Gauge	<b>1/10 in</b>	<b>39.4 per 10 cm</b>
Stitches	<b>10.0 per in</b>	<b>40.5 per 10 cm</b>
Finished Pile Thickness	<b>0.121 in</b>	<b>3.07 mm</b>
Average Density	<b>4760 oz/yd<sup>3</sup></b>	<b>0.176 g/cm<sup>3</sup></b>
Kilotex		<b>8.75</b>
Total Thickness	<b>0.246 in</b>	<b>6.25 mm</b>
Tufted Weight	<b>16 oz/yd<sup>2</sup></b>	<b>542.5 g/m<sup>2</sup></b>

### Recommended Installation Method



### Coordinating Products

Carpet Tile: **Array Tile, Offset Tile, Structure Tile**  
 Broadloom: **Amend, Accord**

### Performance + Testing

Antimicrobial Assessment	<b>Passes (AATCC-174) (When installed using Shaw 5036 adhesive)</b>
Pill Test	<b>Pass</b>
Radiant Panel	<b>Class I</b>
NBS Smoke	<b>Less Than 450</b>
Electrostatic Propensity	<b>Less Than 3.5 kv</b>
CRI Green Label Plus (GLP)	<b>GLP2671</b>
ADA Compliance	<b>&gt;0.6, meets the recommended static coefficient of friction for ADA walking surfaces and accessible routes***</b>

Test Reports may be included or listed by the manufacturing/inventory style number as opposed to the noted selling style number.

### Warranties

[15 Year Commercial Limited Warranty](#)

Corporate Headquarters +1 800 257 7429 | +1 706 532 7984 | Atlanta +1 404 853 7429 | Bengaluru +91 80 6773 0202 | Beijing +86 10 6568 588 | Chicago +1 312 467 1331 | Dubai +971 4 584 6956 | Hong Kong +852 2623 0371 | Latin America (Miami) +1 305 827 5912 | London +44 207 961 4120 | Los Angeles +1 800 233 1614 | Melbourne +61 3 9939 8543 | Mexico City +52 5010 7600 | Mumbai +91 22 6284 5050 | Nantong +86 400 800 7429 | New York +1 212 953 7429 | Paris +33 (0) 1 81 22 44 39 | San Francisco +1 415 955 1920 | Santiago +562 2431 5000 x 550 | São Paulo +55 11 3071 1702 | Shanghai +86 21 3338 4000 | Singapore +65 6733 1811 | Sydney +1 800 556 302

© 2021 Shaw Industries Group, Inc., a Berkshire Hathaway Company  
 July 27, 2021

## Terrain II 20 Mil

RESILIENT 15 YEAR COMMERCIAL LIMITED WARRANTY

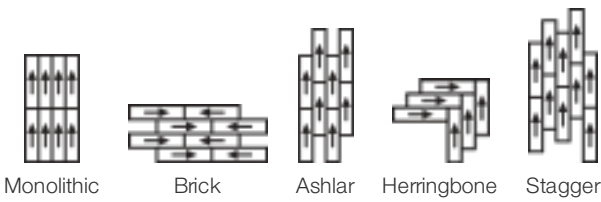
<https://pdmsview.shawinc.com/viewer/doc/5313>

Collection	<b>Terrain II</b>	
Style Number	<b>0454V</b>	
Construction	<b>Heavy Commercial Luxury Vinyl Tile</b>	
Class / ASTM F1700	<b>Class III, Type B</b>	
Finish	<b>ExoGuard+™</b>	
	U.S.	Metric
Nominal Dimensions	<b>6 in w x 48 in l</b>	<b>15 cm w x 122 cm l</b>
Actual Dimensions	<b>5.96 in w x 48.00 in l</b>	<b>15.14 cm w x 121.92 cm l</b>
Wear Layer Thickness	<b>20 mil (0.02 in)</b>	<b>0.51 mm</b>
Overall Thickness	<b>0.098 in</b>	<b>2.5 mm</b>
Edge Profile	<b>Squared Edge</b>	
Installation	<b>Direct Glue</b>	
Recommended Adhesive	<b>4151, LG4100 4G or S150-95</b>	

### Packaging

Pieces per Carton	<b>21 pcs</b>	
Area per Carton	<b>41.72 sq ft</b>	<b>3.88 sq m</b>
Weight per Carton	<b>35.44 lbs</b>	<b>16.08 kg</b>

### Recommended Installation Method



### Coordinating Products

LVT: Terrain II 12 Mil, Terrain II 30 Mil, Terrain II 20 Mil 5 Mm  
 COREtec: Terrain II Coretec

## Compound 2.5 Mm

RESILIENT 15 YEAR COMMERCIAL LIMITED WARRANTY

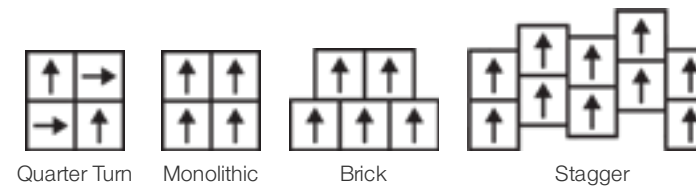
<https://pdmsview.shawinc.com/viewer/doc/5313>

Collection	<b>Compound + Cast</b>	
Style Number	<b>4074V</b>	
Construction	<b>Heavy Commercial Luxury Vinyl Tile</b>	
Class / ASTM F1700	<b>Class III, Type B</b>	
Finish	<b>ExoGuard+™</b>	
	U.S.	Metric
Nominal Dimensions	<b>24 in w x 24 in l</b>	<b>61 cm w x 61 cm l</b>
Actual Dimensions	<b>24.00 in w x 24.00 in l</b>	<b>60.96 cm w x 60.96 cm l</b>
Wear Layer Thickness	<b>20 mil (0.02 in)</b>	<b>0.51 mm</b>
Overall Thickness	<b>0.098 in</b>	<b>2.5 mm</b>
Edge Profile	<b>Squared Edge</b>	
Installation	<b>Direct Glue</b>	
Recommended Adhesive	<b>S150-95, LG4100 4G or 4151</b>	

### Packaging

Pieces per Carton	<b>17 pcs</b>	
Area per Carton	<b>68 sq ft</b>	<b>6.32 sq m</b>
Weight per Carton	<b>57.79 lbs</b>	<b>26.21 kg</b>

### Recommended Installation Method



### Coordinating Products

LVT: Compound 5.0, Cast 2.5 Mm, Cast 5.0 Mm

### Performance + Testing

Static Load (ASTM F970)	<b>Passes (Modified), *1000 PSI</b>	*This test is intended to compare relative properties of different styles and constructions. Results are based on a laboratory test and used for comparative purposes - real life load limit may vary.
Residual Indentation (ASTM F1914)	<b>Passes</b>	
Resistance to Heat (ASTM F1514)	<b>Passes</b>	
Resistance to Light (ASTM F1515)	<b>Passes</b>	
Resistance to Chemicals (ASTM F925)	<b>Passes</b>	
Smoke Density (ASTM E662, Flaming Mode)	<b>Passes</b>	
Radiant Panel (ASTM E648)	<b>Passes, Class I</b>	
Coefficient of Friction (ASTM D2047, Slip Resistance)	<b>≥0.5, meets the recommended static coefficient of friction for ADA walking surfaces</b>	

Test Reports may be included or listed by the manufacturing/inventory style number as opposed to the noted selling style number.

Corporate Headquarters +1 800 257 7429 | +1 706 532 7984 | Atlanta +1 404 853 7429 | Bengaluru +91 80 6773 0202 | Beijing +86 10 6568 588 | Chicago +1 312 467 1331 | Dubai +971 4 584 6956 | Hong Kong +852 2623 0371 | Latin America (Miami) +1 305 827 5912 | London +44 207 961 4120 | Los Angeles +1 800 233 1614 | Melbourne +61 3 9939 8543 | Mexico City +52 5010 7600 | Mumbai +91 22 6284 5050 | Nantong +86 400 800 7429 | New York +1 212 953 7429 | Paris +33 (0) 1 81 22 44 39 | San Francisco +1 415 955 1920 | Santiago +562 2431 5000 x 550 | São Paulo +55 11 3071 1702 | Shanghai +86 21 3338 4000 | Singapore +65 6733 1811 | Sydney +1 800 556 302

© 2021 Shaw Industries Group, Inc., a Berkshire Hathaway Company  
July 21, 2021

# Routine Product Maintenance

The proper maintenance plan for your Shaw Contract flooring will help protect your investment by extending the life and performance of your products.

---

## Carpet

CARPET MAINTENANCE CHECKLIST

<https://pdmsview.shawinc.com/viewer/doc/6464> ▶

STEP BY STEP COMMERCIAL CARPET MAINTENANCE (ENGLISH)

<https://qmsview.shawinc.com/viewer/doc/8444> ▶

STEP BY STEP COMMERCIAL CARPET MAINTENANCE (SPANISH)

<https://qmsview.shawinc.com/viewer/doc/8446> ▶

---

## Resilient

RESILIENT MAINTENANCE CHECKLIST

<https://pdmsview.shawinc.com/viewer/doc/3361> ▶

STEP BY STEP COMMERCIAL RESILIENT MAINTENANCE (ENGLISH)

<https://qmsview.shawinc.com/viewer/doc/8445> ▶

STEP BY STEP COMMERCIAL RESILIENT MAINTENANCE (SPANISH)

<https://qmsview.shawinc.com/viewer/doc/8447> ▶



# ShawContract®

shawcontract.com

## Thank You.

### Contacts:

#### Melissa Smith

Account Manager

Shaw Integrated Solutions

melissa.smith2@shawinc.com

o: 706.532.7408

#### Rebecca Crosby

Senior Account Manager

Jacksonville & NE Florida

rebecca.crosby@shawcontract.com

m: 904.517.3308

#### Jay Loughran

Vice President Strategic Accounts

Southeast

jay.loughran@shawinc.com

m: 615.752.9691

### Customer & Product Support:

1.800.257.SHAW (7429)

www.shawcontract.com

### Maintenance & Technical Support:

technicalsupport.shawinc.com