

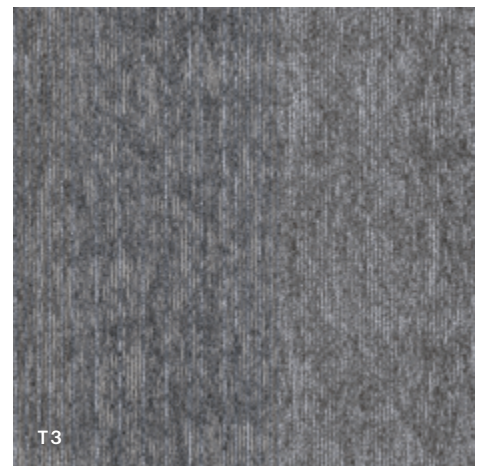
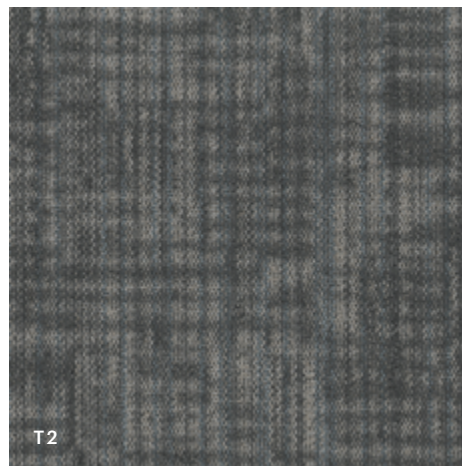
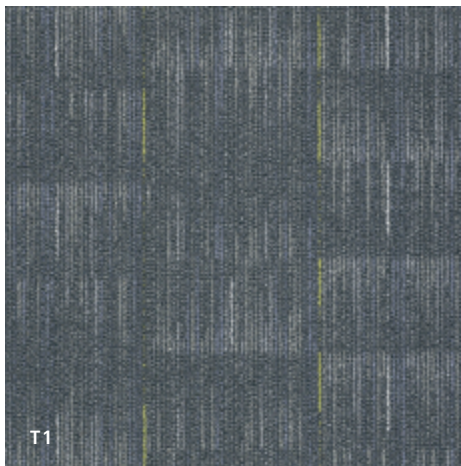
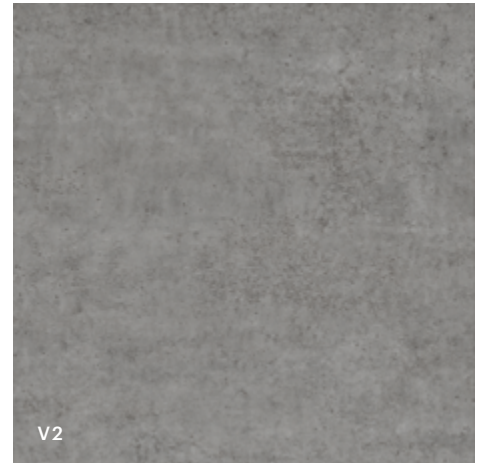


JBA | JULY 2021

FLOORING SOLUTIONS FOR SMARTER IMPACTS

Design Standards

Design Finishes



Carpet Tile

T1	SHINE TILE 59328 24X24 FLASHPOINT 27485	\$15.25 /SY
T2	CORRESPOND STRATAWORX 5T353 24X24 ALIKE 52557	\$14.25 /SY
T3	ARRANGE STRATAWORX 5T294 24X24 STERLING SILVER 94515	\$13.25 /SY

LVT

V1	TERRAIN II 20 MIL 0454V 6X48 LARK 05016	\$2.10 /SF
V2	COMPOUND 2.5MM 4074V 24X24 ELEVATE 77518	\$2.40 /SF

Wall Base

W1	4" COVE BASE 148VS 4X120 SLATE 00580	\$87.60 /ROLL
-----------	---	-------------------------

Paint

P1	BENJAMIN MOORE (MAIN WALL) MOUNTAINSCAPE 870
P2	SHERWIN WILLIAMS (ACCENT) FUNCTIONAL GRAY SW 7024

NOTE: Pricing is for material only and effective through July 31, 2022.



ShawContract®

Shine Tile

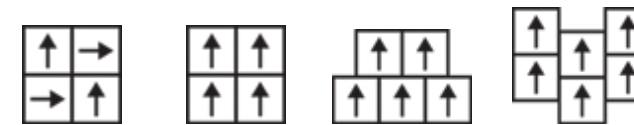
CARPET TILE LIFETIME COMMERCIAL LIMITED WARRANTY FOR ECOWORX® WITH STAIN AND COLOR

<https://pdmsview.shawinc.com/viewer/doc/5965>

Product Type	Carpet Tile
Collection	Brightwork
Style Number	59328
Construction	Multi-Level Pattern Loop
Fiber	Eco Solution Q® Nylon
Dye Method	100% Solution Dyed
Primary Backing	Synthetic
Secondary Backing	Ecworx® Tile
Protective Treatments	SSP® Shaw Soil Protection
Recommended Adhesive	Shaw 5000, Shaw 5100, Shaw 4151, LokDots, LokWorx, Shaw 3800 or Shaw 5036

	u.s.	metric
Product Size	24 in x 24 in	61 cm x 61 cm
Area per Carton	48 ft²	4.46 m²
Pieces per Carton	12 pcs	
Gauge	1/12 in	47.2 per 10 cm
Stitches	8.5 per in	34.5 per 10 cm
Finished Pile Thickness	0.116 in	2.95 mm
Average Density	5276 oz/yd³	0.195 g/cm³
Kilotex		9.5
Total Thickness	0.246 in	6.25 mm
Tufted Weight	17 oz/yd²	576.4 g/m²

Recommended Installation Method



Quarter Turn Monolithic Brick Ashlar

Coordinating Products

Carpet Tile: **Allure Tile, Glimmer Tile**

Broadloom: **Flicker, Flare, Amplify, Illuminate**

Performance + Testing

Antimicrobial Assessment	Passes (AATCC-174) (When installed using Shaw 5036 adhesive)
Pill Test	Pass
Radiant Panel	Class I
NBS Smoke	Less Than 450
Electrostatic Propensity	Less Than 3.5 kv
CRI Green Label Plus (GLP)	GLP9968
ADA Compliance	>0.6, meets the recommended static coefficient of friction for ADA walking surfaces and accessible routes***

Test Reports may be included or listed by the manufacturing/inventory style number as opposed to the noted selling style number.

Warranties

[Lifetime Commercial Limited Warranty](#)

Corporate Headquarters +1 800 257 7429 | +1 706 532 7984 | Atlanta +1 404 853 7429 | Bengaluru +91 80 6773 0202 | Beijing +86 10 6568 588 | Chicago +1 312 467 1331 | Dubai +971 4 584 6956 | Hong Kong +852 2623 0371 | Latin America (Miami) +1 305 827 5912 | London +44 207 961 4120 | Los Angeles +1 800 233 1614 | Melbourne +61 3 9939 8543 | Mexico City +55 5010 7600 | Mumbai +91 22 6284 5050 | Nantong +86 400 800 7429 | New York +1 212 953 7429 | Paris +33 (0) 1 81 22 44 39 | San Francisco +1 415 955 1920 | Santiago +562 2431 5000 x 550 | São Paulo +55 11 3071 1702 | Shanghai +86 21 3338 4000 | Singapore +65 6733 1811 | Sydney +1 800 556 302

© 2021 Shaw Industries Group, Inc., a Berkshire Hathaway Company
July 22, 2021

Carpet Tile 2



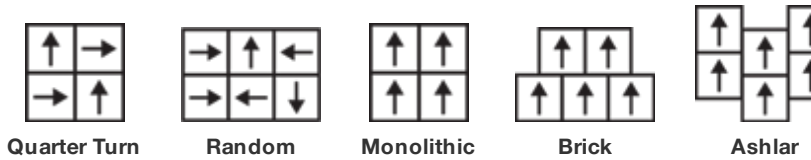
ShawContract®

Correspond Tile

Product Type	Carpet Tile	CARPET TILE 15 YEAR COMMERCIAL LIMITED FOR STRATAWORX
Collection	In Sync	https://qmsview.shawinc.com/viewer/doc/5975
Style Number	5T353	
Construction	Multi-Level Pattern Loop	
Fiber	Eco Solution Q® Nylon	
Dye Method	100% Solution Dyed	
Primary Backing	Synthetic	
Secondary Backing	Strataworx® Tile	
Protective Treatments	SSP® Shaw Soil Protection	
Recommended Adhesive	Shaw 5000, Shaw 5100, Shaw 4151, Shaw 3800 or Shaw 5036	

	u.s.	metric
Product Size	24 in x 24 in	61 cm x 61 cm
Area per Carton	80 ft²	7.43 m²
Pieces per Carton	20 pcs	
Gauge	1/10 in	39.4 per 10 cm
Stitches	10.0 per in	39.0 per 10 cm
Finished Pile Thickness	0.079 in	2.01 mm
Average Density	6835 oz/yd³	0.253 g/cm³
Total Thickness	0.238 in	6.05 mm
Tufted Weight	15 oz/yd²	508.6 g/m²

Recommended Installation Method



Coordinating Products

Carpet Tile: **Companion Tile, Partner Tile**

Performance + Testing

Antimicrobial Assessment	Passes (AATCC-174) (When installed using Shaw 5036 adhesive)
Pill Test	Pass
Radiant Panel	Class I
NBS Smoke	Less Than 450
Electrostatic Propensity	Less Than 3.5 kv
CRI Green Label Plus (GLP)	GLP2671
ADA Compliance	>0.6, meets the recommended static coefficient of friction for ADA walking surfaces and accessible routes***

Test Reports may be included or listed by the manufacturing/inventory style number as opposed to the noted selling style number.

Warranties

[15 Year Commercial Limited Warranty](#)

CORRESPOND STRATAWORX (5T353) IN ALIKE (52557)

Corporate Headquarters +1 800 257 7429 | +1 706 532 7984 | Atlanta +1 404 853 7429 | Bengaluru +91 80 6773 0202 | Beijing +86 10 6568 588 | Chicago +1 312 467 1331 | Dubai +971 4 584 6956 | Hong Kong +852 2623 0371 | Latin America (Miami) +1 305 827 5912 | London +44 207 961 4120 | Los Angeles +1 800 233 1614 | Melbourne +61 3 9939 8543 | Mexico City +52 5010 7600 | Mumbai +91 22 6284 5050 | Nantong +86 400 800 7429 | New York +1 212 953 7429 | Paris +33 (0) 1 81 22 44 39 | San Francisco +1 415 955 1920 | Santiago +562 2431 5000 x 550 | São Paulo +55 11 3071 1702 | Shanghai +86 21 3338 4000 | Singapore +65 6733 1811 | Sydney +1 800 556 302

© 2021 Shaw Industries Group, Inc., a Berkshire Hathaway Company
July 23, 2021

1 of 2

5

For reference purposes only if printed or downloaded.



ARRANGE TILE (5T294) IN STERLING SILVER (94515)

ShawContract®

Arrange Tile

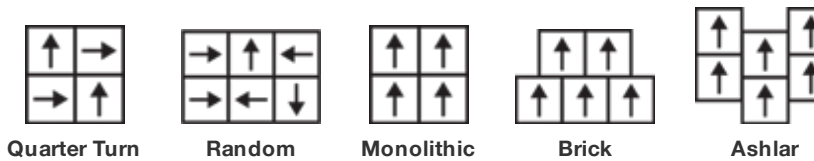
CARPET TILE 15 YEAR COMMERCIAL LIMITED FOR STRATAWORX

<https://qmsview.shawinc.com/viewer/doc/5975>

Product Type	Carpet Tile
Collection	Simply By Nature
Style Number	5T294
Construction	Multi-Level Pattern Loop
Fiber	Eco Solution Q® Nylon
Dye Method	100% Solution Dyed
Primary Backing	Synthetic
Secondary Backing	Strataworx® Tile
Protective Treatments	SSP® Shaw Soil Protection
Recommended Adhesive	Shaw 5000, Shaw 5100, Shaw 4151, Shaw 3800 or Shaw 5036

	u.s.	metric
Product Size	24 in x 24 in	61 cm x 61 cm
Area per Carton	80 ft²	7.43 m²
Pieces per Carton	20 pcs	
Gauge	1/10 in	39.4 per 10 cm
Stitches	10.0 per in	40.5 per 10 cm
Finished Pile Thickness	0.121 in	3.07 mm
Average Density	4760 oz/yd³	0.176 g/cm³
Kilotex		8.75
Total Thickness	0.246 in	6.25 mm
Tufted Weight	16 oz/yd²	542.5 g/m²

Recommended Installation Method



Coordinating Products

Carpet Tile: **Array Tile, Offset Tile, Structure Tile**

Broadloom: **Amend, Accord**

Performance + Testing

Antimicrobial Assessment	Passes (AATCC-174) (When installed using Shaw 5036 adhesive)
Pill Test	Pass
Radiant Panel	Class I
NBS Smoke	Less Than 450
Electrostatic Propensity	Less Than 3.5 kv
CRI Green Label Plus (GLP)	GLP2671
ADA Compliance	>0.6, meets the recommended static coefficient of friction for ADA walking surfaces and accessible routes***

Test Reports may be included or listed by the manufacturing/inventory style number as opposed to the noted selling style number.

Warranties

[15 Year Commercial Limited Warranty](#)

Corporate Headquarters +1 800 257 7429 | +1 706 532 7984 | Atlanta +1 404 853 7429 | Bengaluru +91 80 6773 0202 | Beijing +86 10 6568 588 | Chicago +1 312 467 1331 | Dubai +971 4 584 6956 | Hong Kong +852 2623 0371 | Latin America (Miami) +1 305 827 5912 | London +44 207 961 4120 | Los Angeles +1 800 233 1614 | Melbourne +61 3 9939 8543 | Mexico City +55 5010 7600 | Mumbai +91 22 6284 5050 | Nantong +86 400 800 7429 | New York +1 212 953 7429 | Paris +33 (0) 1 81 22 44 39 | San Francisco +1 415 955 1920 | Santiago +562 2431 5000 x 550 | São Paulo +55 11 3071 1702 | Shanghai +86 21 3338 4000 | Singapore +65 6733 1811 | Sydney +1 800 556 302

© 2021 Shaw Industries Group, Inc., a Berkshire Hathaway Company
July 27, 2021

Terrain II 20 Mil

Collection	Terrain II	
Style Number	0454V	
Construction	Heavy Commercial Luxury Vinyl Tile	
Class / ASTM F1700	Class III, Type B	
Finish	ExoGuard+™	
	U.S.	Metric
Nominal Dimensions	6 in w x 48 in l	15 cm w x 122 cm l
Actual Dimensions	5.96 in w x 48.00 in l	15.14 cm w x 121.92 cm l
Wear Layer Thickness	20 mil (0.02 in)	0.51 mm
Overall Thickness	0.098 in	2.5 mm
Edge Profile	Squared Edge	
Installation	Direct Glue	
Recommended Adhesive	4151, LG4100 4G or S150-95	

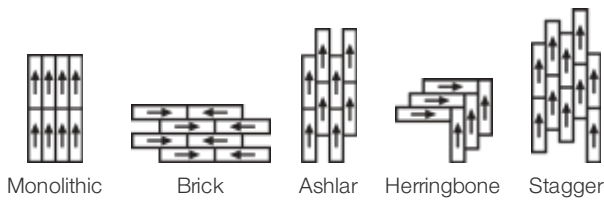
RESILIENT 15 YEAR COMMERCIAL LIMITED WARRANTY

<https://pdmsview.shawinc.com/viewer/doc/5313>

Packaging

Pieces per Carton	21 pcs	
Area per Carton	41.72 sq ft	3.88 sq m
Weight per Carton	35.44 lbs	16.08 kg

Recommended Installation Method



Coordinating Products

LVT: Terrain II 12 Mil, Terrain II 30 Mil, Terrain II 20 Mil 5 Mm
 COREtec: Terrain II Coretec

Compound 2.5 Mm

RESILIENT 15 YEAR COMMERCIAL LIMITED WARRANTY

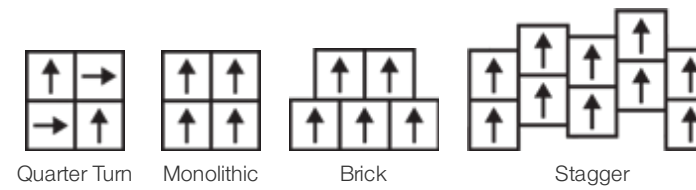
<https://pdmsview.shawinc.com/viewer/doc/5313>

Collection	Compound + Cast	
Style Number	4074V	
Construction	Heavy Commercial Luxury Vinyl Tile	
Class / ASTM F1700	Class III, Type B	
Finish	ExoGuard+™	
	U.S.	Metric
Nominal Dimensions	24 in w x 24 in l	61 cm w x 61 cm l
Actual Dimensions	24.00 in w x 24.00 in l	60.96 cm w x 60.96 cm l
Wear Layer Thickness	20 mil (0.02 in)	0.51 mm
Overall Thickness	0.098 in	2.5 mm
Edge Profile	Squared Edge	
Installation	Direct Glue	
Recommended Adhesive	S150-95, LG4100 4G or 4151	

Packaging

Pieces per Carton	17 pcs	
Area per Carton	68 sq ft	6.32 sq m
Weight per Carton	57.79 lbs	26.21 kg

Recommended Installation Method



Coordinating Products

LVT: Compound 5.0, Cast 2.5 Mm, Cast 5.0 Mm

Performance + Testing

Static Load (ASTM F970)	Passes (Modified), *1000 PSI	*This test is intended to compare relative properties of different styles and constructions. Results are based on a laboratory test and used for comparative purposes - real life load limit may vary.
Residual Indentation (ASTM F1914)	Passes	
Resistance to Heat (ASTM F1514)	Passes	
Resistance to Light (ASTM F1515)	Passes	
Resistance to Chemicals (ASTM F925)	Passes	
Smoke Density (ASTM E662, Flaming Mode)	Passes	
Radiant Panel (ASTM E648)	Passes, Class I	
Coefficient of Friction (ASTM D2047, Slip Resistance)	≥0.5, meets the recommended static coefficient of friction for ADA walking surfaces	

Test Reports may be included or listed by the manufacturing/inventory style number as opposed to the noted selling style number.

Corporate Headquarters +1 800 257 7429 | +1 706 532 7984 | Atlanta +1 404 853 7429 | Bengaluru +91 80 6773 0202 | Beijing +86 10 6568 588 | Chicago +1 312 467 1331 | Dubai +971 4 584 6956 | Hong Kong +852 2623 0371 | Latin America (Miami) +1 305 827 5912 | London +44 207 961 4120 | Los Angeles +1 800 233 1614 | Melbourne +61 3 9939 8543 | Mexico City +52 5010 7600 | Mumbai +91 22 6284 5050 | Nantong +86 400 800 7429 | New York +1 212 953 7429 | Paris +33 (0) 1 81 22 44 39 | San Francisco +1 415 955 1920 | Santiago +562 2431 5000 x 550 | São Paulo +55 11 3071 1702 | Shanghai +86 21 3338 4000 | Singapore +65 6733 1811 | Sydney +1 800 556 302

© 2021 Shaw Industries Group, Inc., a Berkshire Hathaway Company
July 21, 2021

Routine Product Maintenance

The proper maintenance plan for your Shaw Contract flooring will help protect your investment by extending the life and performance of your products.

Carpet

CARPET MAINTENANCE CHECKLIST

<https://pdmsview.shawinc.com/viewer/doc/6464> ▶

STEP BY STEP COMMERCIAL CARPET MAINTENANCE (ENGLISH)

<https://qmsview.shawinc.com/viewer/doc/8444> ▶

STEP BY STEP COMMERCIAL CARPET MAINTENANCE (SPANISH)

<https://qmsview.shawinc.com/viewer/doc/8446> ▶

Resilient

RESILIENT MAINTENANCE CHECKLIST

<https://pdmsview.shawinc.com/viewer/doc/3361> ▶

STEP BY STEP COMMERCIAL RESILIENT MAINTENANCE (ENGLISH)

<https://qmsview.shawinc.com/viewer/doc/8445> ▶

STEP BY STEP COMMERCIAL RESILIENT MAINTENANCE (SPANISH)

<https://qmsview.shawinc.com/viewer/doc/8447> ▶



ShawContract®

shawcontract.com

Thank You.

Contacts:

Melissa Smith

Account Manager

Shaw Integrated Solutions

melissa.smith2@shawinc.com

o: 706.532.7408

Rebecca Crosby

Senior Account Manager

Jacksonville & NE Florida

rebecca.crosby@shawcontract.com

m: 904.517.3308

Jay Loughran

Vice President Strategic Account

Southeast

jay.loughran@shawinc.com

m: 615.752.9691

Customer & Product Support:

1.800.257.SHAW (7429)

www.shawcontract.com

Maintenance & Technical Support:

technicalsupport.shawinc.com